

MONARCH  
*Cypress*



# ROBE SPECIFICATIONS

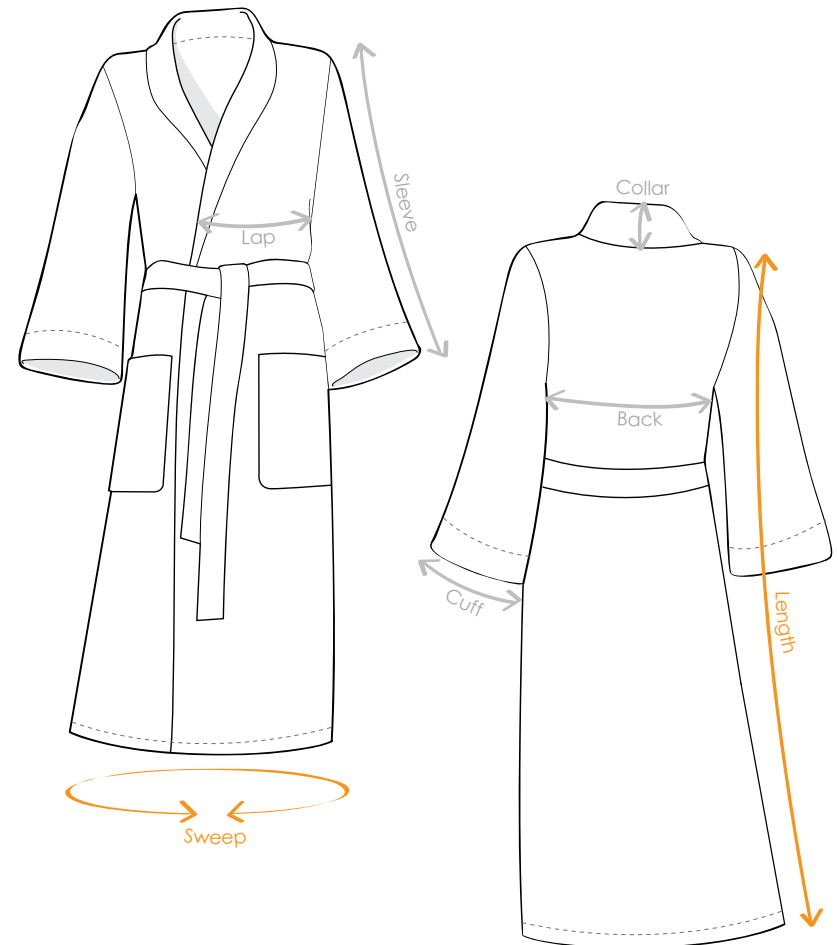


## The Monarch Robe & Towel Company

For over a quarter of a century, Monarch Robe & Towel Company has been a leading supplier of fine bathrobes, towels and slippers to the hospitality industry. Our extensive line of products combines exacting manufacturing standards with the highest quality materials, and features a wide range of styles and fabrications to complement any property environment. Monarch maintains manufacturing facilities on every major continent, and is the trusted supplier of four- and five-star properties around the world. With corporate headquarters in Perth Amboy, New Jersey, Monarch's 35,000 sq. ft. facility warehouses the industry's largest inventory, as well as an in-house embroidery department.

## Cypress Luxury Bed & Bath Amenities

Since creating our first terry velour hotel bathrobe in 1980, Cypress has become a leading manufacturer and supplier of luxurious bed and bath amenities for the hospitality and spa industries. Our bathrobes, towels and sheets are featured at hundreds of luxury resorts, boutique hotels, spas, bed & breakfasts, and cruise lines. All Cypress products are constructed from the finest materials and manufactured in some of the best mills in the world. In 2011, Cypress became part of the Monarch family.



\* Please note that many robe suppliers incorrectly include the collar height in the length of the robe.

# KIMONO

A classic robe crafted in absorbent 100% cotton terry or terry velour. Sized to fit most in 48" length. Some styles available in 52" length, XL, XXL, 4XL and colors.

STYLE 501  
Loop Terry Kimono. 330gsm



White

STYLE 261  
Classic Velour Robe. 400gsm



White



Butter



Pink



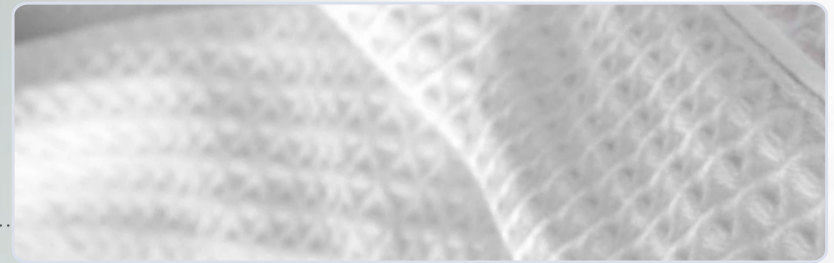
Navy



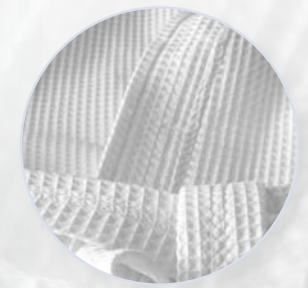


# LIGHTWEIGHT KIMONO

Various textured patterns in a lightweight cotton or cotton/poly blend produce a robe that is compact, absorbent and attractive. Many available in larger sizes.

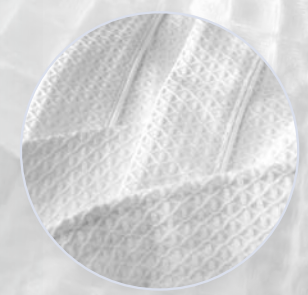


STYLE 401  
67% Cotton / 33% Polyester square pattern.  
210gsm



STYLE 408  
White, Natural  
67% Cotton/ 33% Polyester diamond waffle with  
matching piping. 330gsm

STYLE 01048  
White  
100% Cotton diamond waffle with  
matching piping. 270gsm





STYLE 352  
Pleat back terry shawl collar.  
425gsm



STYLE 251  
Classic terry velour hotel shawl collar.  
400gsm



STYLE 252-48  
Pleat back hotel shawl collar  
terry velour. 400gsm

## CLASSIC SHAWL

Combining luxury and elegance, the classic shawl features soft rounded lapels. Available in either 100% cotton classic loop terry or terry velour. 48" and 52" lengths available. Larger sizes available.





## LIGHTWEIGHT SHAWL

Lightweight shawl collar robes offer the elegance of a shawl collar with the cool comfort of waffle or seersucker.



STYLE H15R002  
Seersucker fabric  
55% cotton / 45% poly



STYLE 405  
Shell pattern waffle.  
75% cotton / 25% poly. 250 gsm





White



Ecru



Charcoal

STYLE 801

## CHAMOIS KIMONO

Our exclusive chamois microfiber robe is lightweight yet warm, soft as flannel, and 5x more absorbent than cotton. In addition, it is virtually indestructible and uses 1/3 the energy to dry. No robe on the market can compare. Made of true Microfiber. Available in one size, 2XL and 4XL

EXCLUSIVE  
CHAMOIS  
microfiber  
super wicking  
fast drying



# CHAMOIS SHAWL

Our exclusive chamois microfiber robe is lightweight yet warm, soft as flannel, and 5x more absorbent than cotton. In addition, it is virtually indestructible and uses 1/3 the energy to dry. No robe on the market can compare. Made of true Microfiber. Some styles are available in larger sizes including XL and 4XL.

EXCLUSIVE  
CHAMOIS  
microfiber  
super wicking  
fast drying

STYLE 853  
Basic shawl collar



White



Ecru

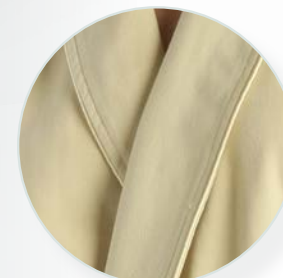


Charcoal

STYLE 873  
Shawl collar with satin piping  
on collar, pocket and cuffs.



White



Camel





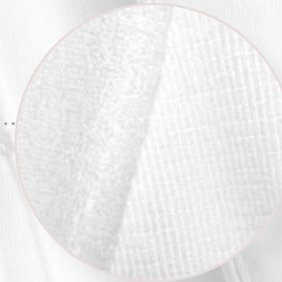
## CHAMOIS GRID (lined or unlined)

Our chamois microfiber in a unique grid pattern. It is 5x more absorbent than cotton. In addition, it is virtually indestructible and uses 1/3 the energy to dry. Available unlined or lined in microfiber plush.

STYLE 855  
unlined  
OS, XL, 4XL



STYLE 755  
lined in microfiber plush.  
OS, 2XL





## Knitted Modal Waffle

Our knitted waffle is extremely soft and supple due to its unique 45% cotton, 45% modal and 10% polyester construction. This product is oversized to compensate for shrinkage.

STYLE 074025







## Cat's Eye Microfiber

Our Mini-Diamond microfiber robe is made of 100% microfiber. It is an elegant addition to any decor. Extremely durable and soft to the touch.

STYLE 893







# PREMIER SHAWL

The ultimate 100% cotton terry velour or terry robes feature rolled cuffs and heavier fabrics for more loft and absorbency. 50" & 52" long. Also available in XL.

STYLE 353  
Luxury rolled cuff shawl collar terry robe.  
480gsm



STYLE 253-50  
Luxury rolled cuff velour shawl collar.  
425 gsm



White



Navy



Dark Green



STYLE 253-STP

## STRIPED PREMIER SHAWL

Our Premier Shawl robe with an elegant pinstripe woven into the fabric. 100% cotton velour. Available in white or natural.



253-STP  
Luxury rolled cuff  
ribbed velour shawl collar.  
400 gsm



Natural



White

# PREMIER HOODED ROBES

Our hooded robes are the most luxurious available. Made of heavy weight 100% cotton terry or terry velour, and featuring fully lined hood and generous cuffs.

STYLE 254  
Rolled cuff velour hooded robe.  
425gsm



Navy



White



Dark Green

STYLE 354-52  
Rolled cuff loop terry hooded robe.  
480gsm





STYLE 463

# HIGH LOW SQUARE VELOUR

Jacquard and solid velour with rope piping accents. 100% cotton terry velour shawl collar robe with rolled cuffs.



STYLE 463





## WAFFLE LINED SHAWL

These robes combine the attractive look of waffle materials with a soft and comfortable liner for warmth and absorbency. Rope piping adds to the luxury appeal.



STYLE 708  
Shell: 67% cotton, 33% polyester  
diamond waffle  
Liner: 100% microfleece



STYLE 743/05001  
Shell: 67% cotton, 33% polyester square  
pattern waffle  
Liner: 80% cotton, 20% polyester knitted terry



# PEACHED MICROFIBER LINED IN TERRY

Peached microfiber shawl with white piping lined in knitted terry. Available in 4 colors and the following sizes -SM, MED, LG (OSFM), XL and XXL. 100% microfiber shell. Lining 80% cotton/20% polyester knitted terry.



White



Stone



Sage



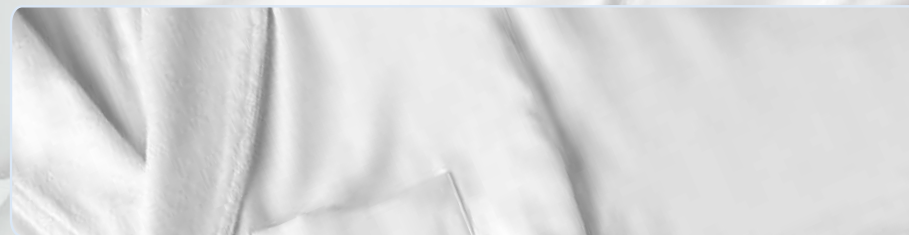
Natural





## ULTRA PEACHED MICROFIBER LINED IN TERRY

Self piped premium brushed microfiber lined in 40 singles knitted terry. Available in white and ecru in SM through 5XL. Other colors available only in one size. 100% premium microfiber. Lining 80% cotton/20% polyester premium knitted terry.



White



Ecru



Sage



Pink

STYLE 770

# MICRO-PLUSH LINED MICROFIBER SHAWL

Piped peached microber lined in super soft micro-plush. Available in 5 colors and the following sizes - SM, MED, LG (OSFM), and XXL. Shell 100% microfiber. Lining 100% micro-plush polyester.



White



Charcoal



Pink



Lemon



Natural



Navy



Periwinkle



Terracotta





Beige



Ivory

STYLE 791

## SILKY SATIN MICROFIBER LINED IN TERRY

The ultimate lined robe made of lustrous silky satin microfiber lined in the finest 40 singles soft, absorbent knitted terry. (80% cotton /20% poly)





STYLE 780

# CORDUROY MICROFIBER LINED IN PLUSH

100% ultraplush microfiber corduroy fabric lined in soft ultra-plush polyester.





STYLE 720

## SEERSUCKER LINED IN TERRY

The classic resort robe in white seersucker (55% cotton / 45% poly) lined in a soft looped terry blend (80% cotton / 20% poly). Washes like a dream.



# SLIPPERS



## **OPEN TOE TERRY**

11" long with terry upper and non-slip sole.  
(Available in Women's 11 / Men's 9.5)



## **CLOSED TOE WAFFLE**

10.5" & 12" long closed toe slipper.  
Waffle upper with terry footbed and non-slip sole.  
(Available in Women's 9.5 / Men's Sm:8, Lg:12)



## **CLOSED TOE VELOUR**

Velour upper and footbed with non-slip sole.  
(Available in Women's 9.5 / Men's Sm:8, Lg:12)



## **CLOSED TOE CHAMOIS**

Chamois upper with fleece lining and rubber dot non-slip sole.  
(Available in Women's 9 / Men's Sm:7, Lg:11)



## **WASHABLE TERRY**

Washable terry slipper with durable PVC non-slip sole.  
(Available in Women's 8.5 / Men's Sm:7, Lg:12)



# TOWELS



## MONARCH GREEN EARTH TOWELS

Monarch Green Earth Eco towels are made from superfine, Extra-Long Stables (ELS) cottons, which is known for contributing to the sustainable consumption of cotton. These towels are 160% bulkier and more absorbent than traditional combed cotton towels. An independent test done at Destination Hotel's Inverness Hotel proved that they cost significantly less to launder, saving up to 30% in water consumption, using less detergent and taking 10-20% less drying time. Monarch Green Earth towels are manufactured in a state-of-the-art, agri-waste powered, zero discharge facility that produces no emission of effluents into the local water tables. The process also incorporates control union-certified, sustainable, eco-friendly dyes and chemicals to reduce impact on the environment.

STYLE	DESCRIPTION	GSM	WEIGHT	LENGTH
432-WC	Wash cloth	484	1.4 lb/dz	13X13
432-HT	Hand towel	481	4 lb/dz	16X30
432-BT	Bath towel	503	12.5 lb/dz	27X54
432-OS	Oversize Bath	500	14.3 lb/dz	30X56
432-BS	Bath sheet	492	20 lb/dz	33X70
432-BM	Bath mat	670	8 lb/dz	20X32



Ecru



## MONARCH KING'S CHOICE

A collection of pristine white, ring spun, combed cotton, terry toweling woven at a full 19 ounces. Fine double yarn on the loops produces terry with greater bounce, a springier feel. Toweling that remains softer; lasting considerably longer and providing greater absorbency.

STYLE	DESCRIPTION	GSM	WEIGHT	LENGTH
TN-WC	Wash cloth ,Ring Spun Combed Cotton 24/2, White	650	2 lb/dz	13X13
TN-HT	Hand towel ,Ring Spun Combed Cotton 24/2, White	650	5.7 lb/dz	16X32
TN-BT	Bath towel ,Ring Spun Combed Cotton 24/2, White	650	16 lb/dz	27X54
TN-BS	Bath sheet ,Ring Spun Combed Cotton 24/2, White	650	28 lb/dz	36X70
TN-BM	Bath mat ,Ring Spun Combed Cotton 24/2, White	900	10 lb/dz	19X35



## LUXE TOWELS

Microcotton® terry toweling developed in India from extra long (ELS) staple cotton. Lightweight yet dense, these towels are able to absorb three times more moisture by weight than the average towel. Extraordinarily soft, white and fluffy Monarch Luxe MicroCotton terry is the most absorbent, quick drying cotton towel on the market.

STYLE	DESCRIPTION	GSM	WEIGHT	LENGTH
436-WC	Wash cloth	585	1.7 lb/dz	13X13
436-HT	Hand towel	585	6.4 lb/dz	20X32
436-BT	Bath towel	585	15 lb/dz	27X54
436-OS	Oversize Bath	585	17 lb/dz	30X56
436-BS	Bath sheet	550	23 lb/dz	33X70
436-BM	Bath mat	780	10 lb/dz	20X35

## CITY BATH MAT

Super soft 100% cotton tufted bath mat with Japanese high-heat resin, non-skid backing is the perfect bath mat for any environment, 20"x30", 2000gsm - style 445.



## CUSTOM TOWELS

Towels made to your specifications in either terry, terry velour, microfiber or fiber reactive print.



## TOWEL WRAPS

Velcro closure towel wraps with a single pocket. Made of 100% cotton terry velour in two lengths: 30" for women and 21" for men.



STYLE 111



STYLE FR4

## CHILDREN'S COVER-UPS

Sized to fit almost any child and made of the best fabrics and fibers. Style 111 is available in 100% cotton terry velour in 7 sizes from toddler to teen in white, pink, blue and navy. Style FR4 is a flame retardant polyester loop terry in sizes 6, 10 and 14.



# ECOLUX LINEN



## ECOLUX LINEN

Constructed of performance microfiber that looks and feels like 600 thread count cotton. Remarkably soft and breathable, the extra fine weave protects against dust mite allergens. Eco friendly and highly sustainable, these linens are recyclable, extremely energy efficient, fast drying, and require no ironing. Guaranteed for 300 washes. 100% Polyester.

STYLE	DESCRIPTION	LENGTH
TC600-PCS	Standard Bag Style Pillowcase	20.5" X 30"
TC600T-PCK	King Bag Style Pillowcase	20.5" x 40"
TC600-SQ	Queen Flat Sheet	94" X 105"
TC600-FDQ	Queen Fitted Sheet	60" X 80" x 18"
TC600SK	King Flat Sheet	112" X 105"
TC600-FDK	King Fitted Sheet	70" x 80" X 18"
TC600-DQ	Queen Duvet Cover	86" X 90"
TC600-DK	King Duvet Cover	104" X 90"





MONARCH  *Cypress*